

COMUNE DI
GONNOSCODINA
PROVINCIA DI ORISTANO

PROGETTO

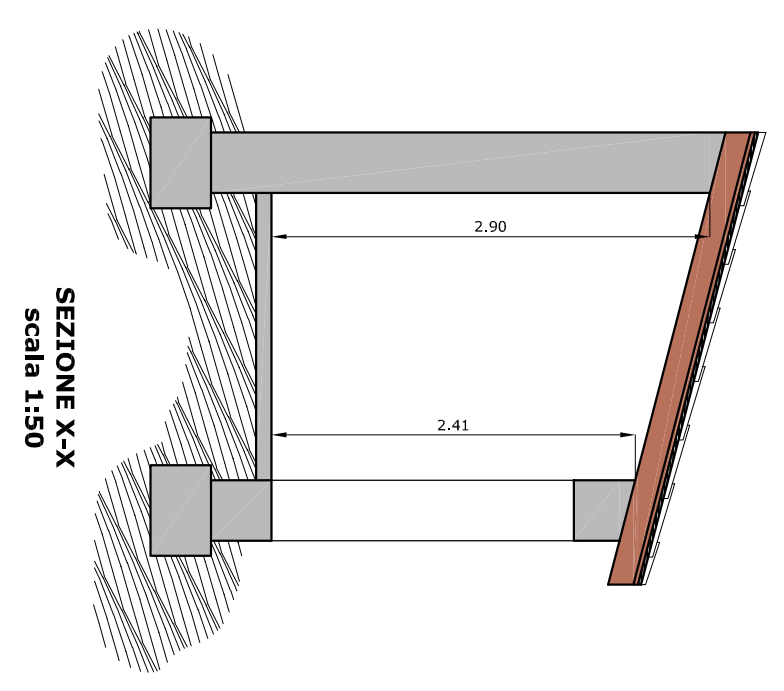
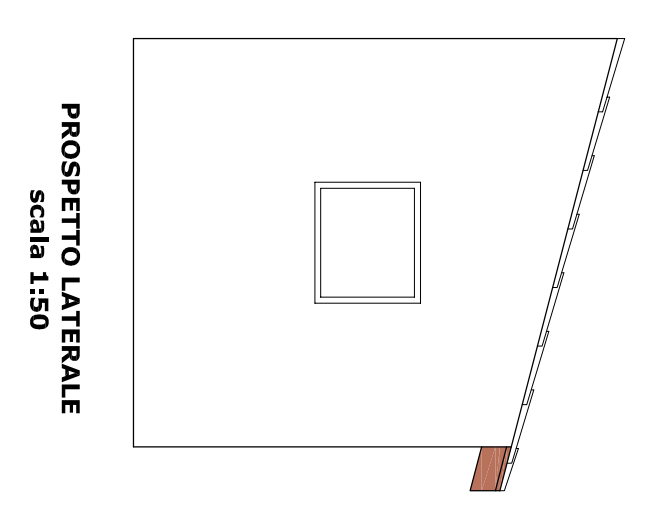
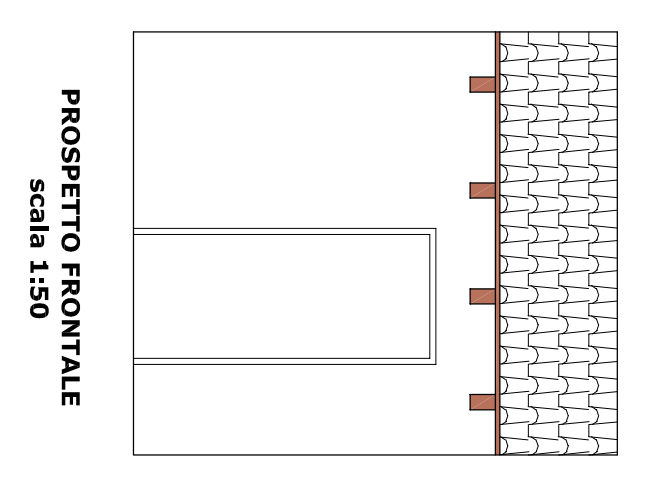
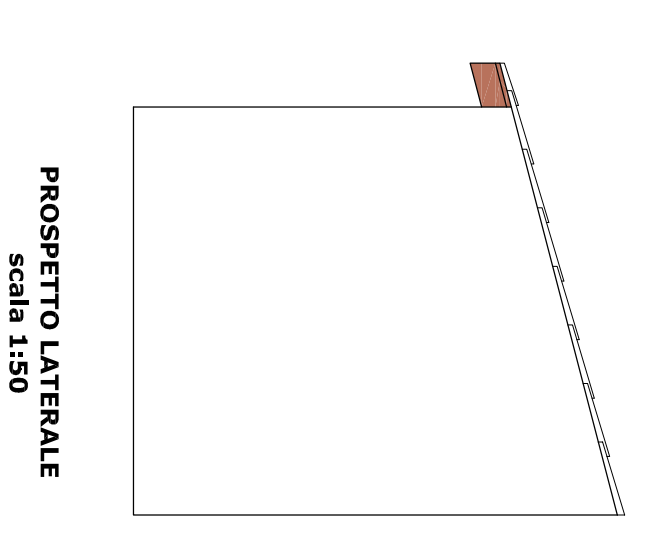
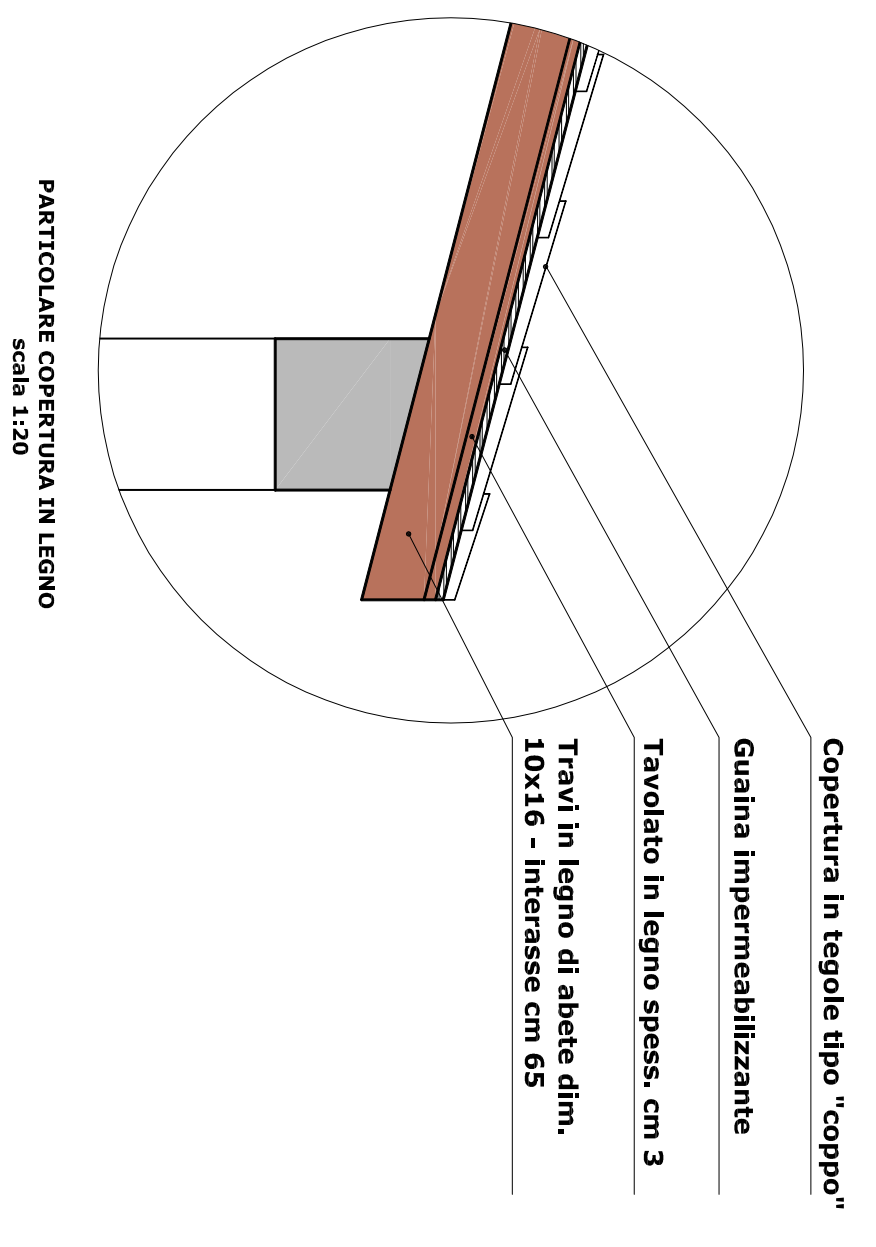
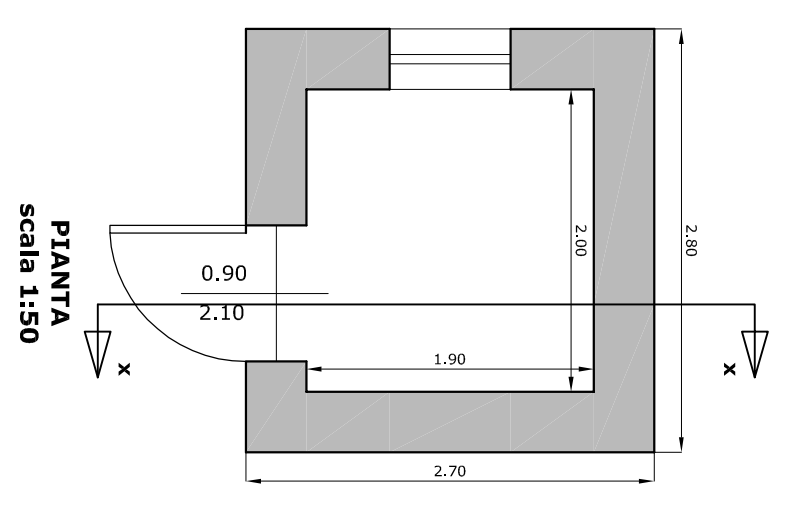
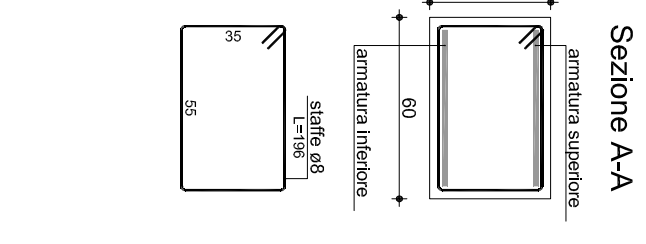
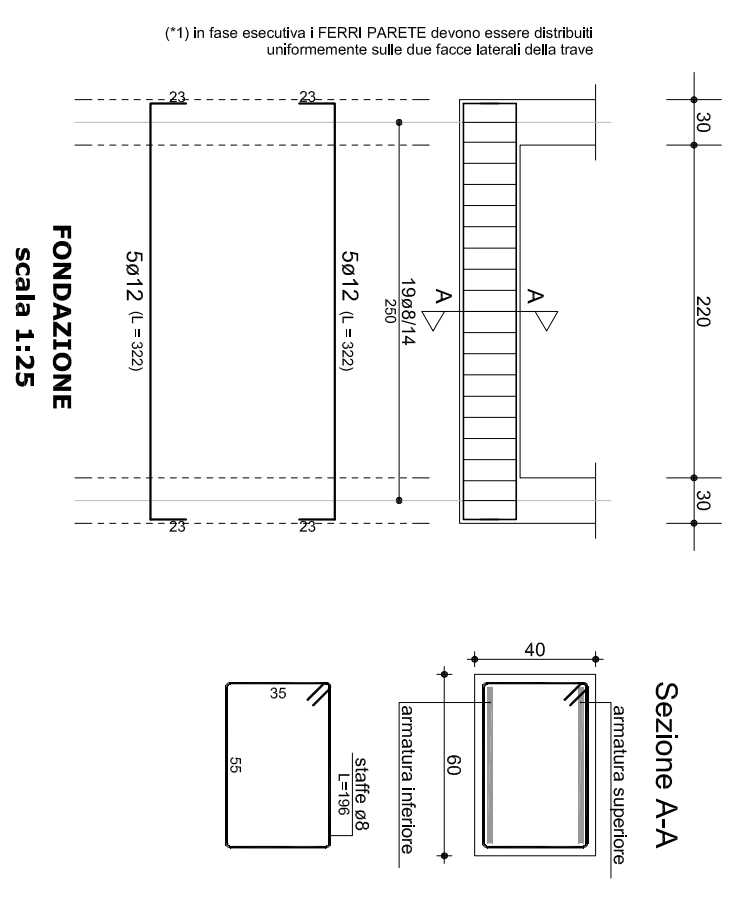
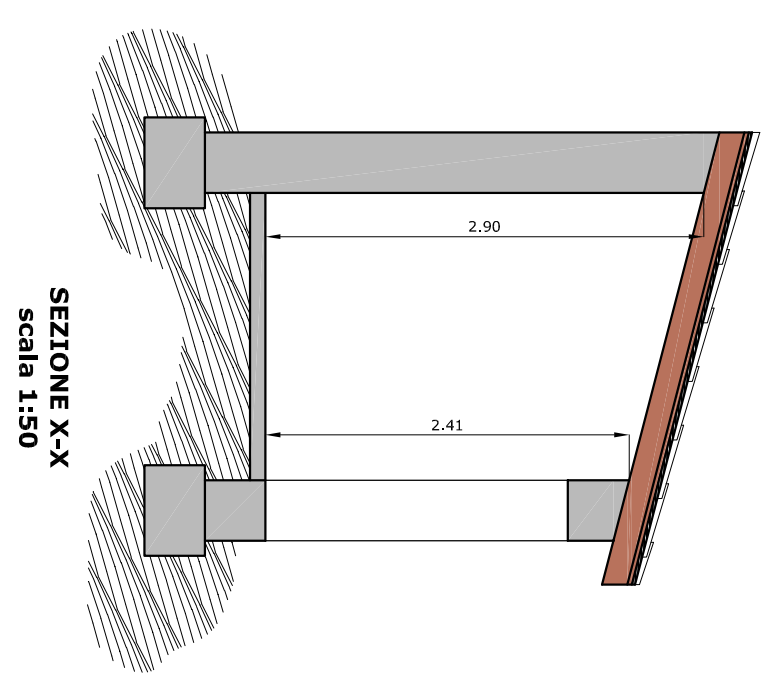
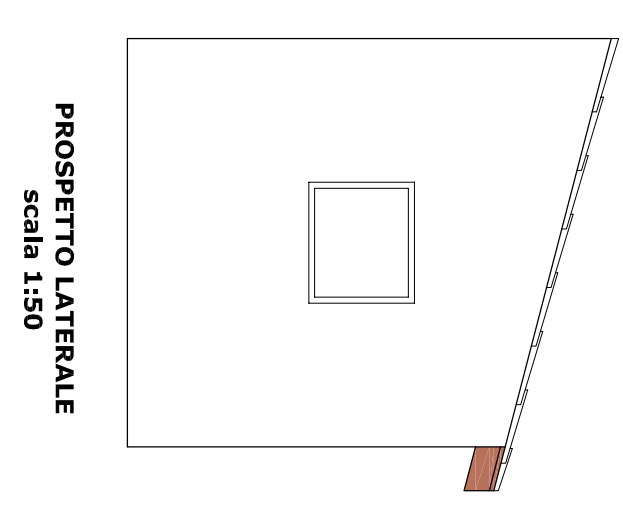
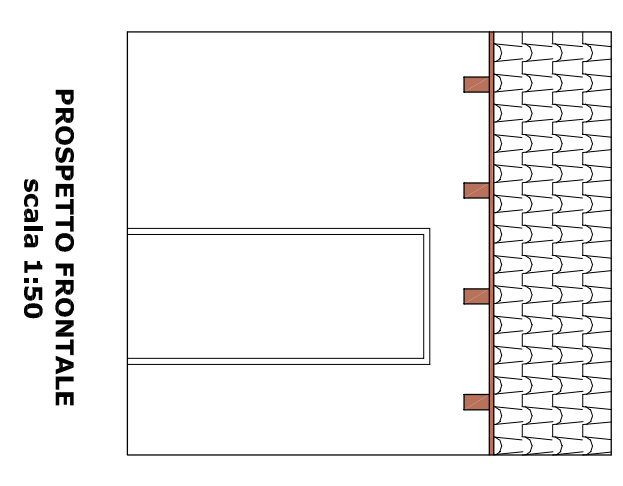
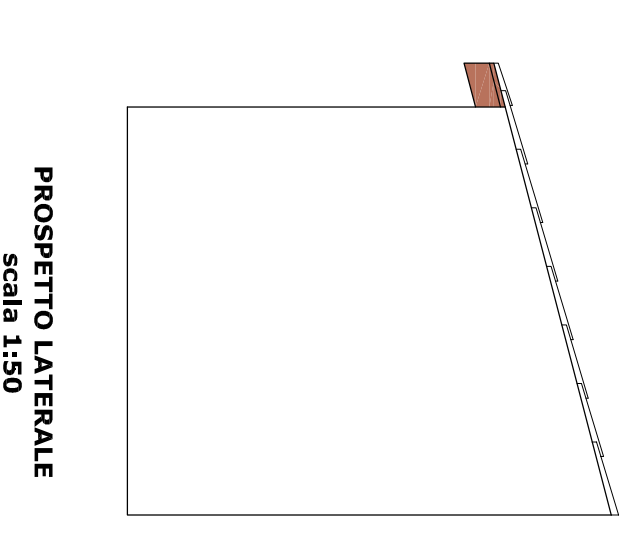
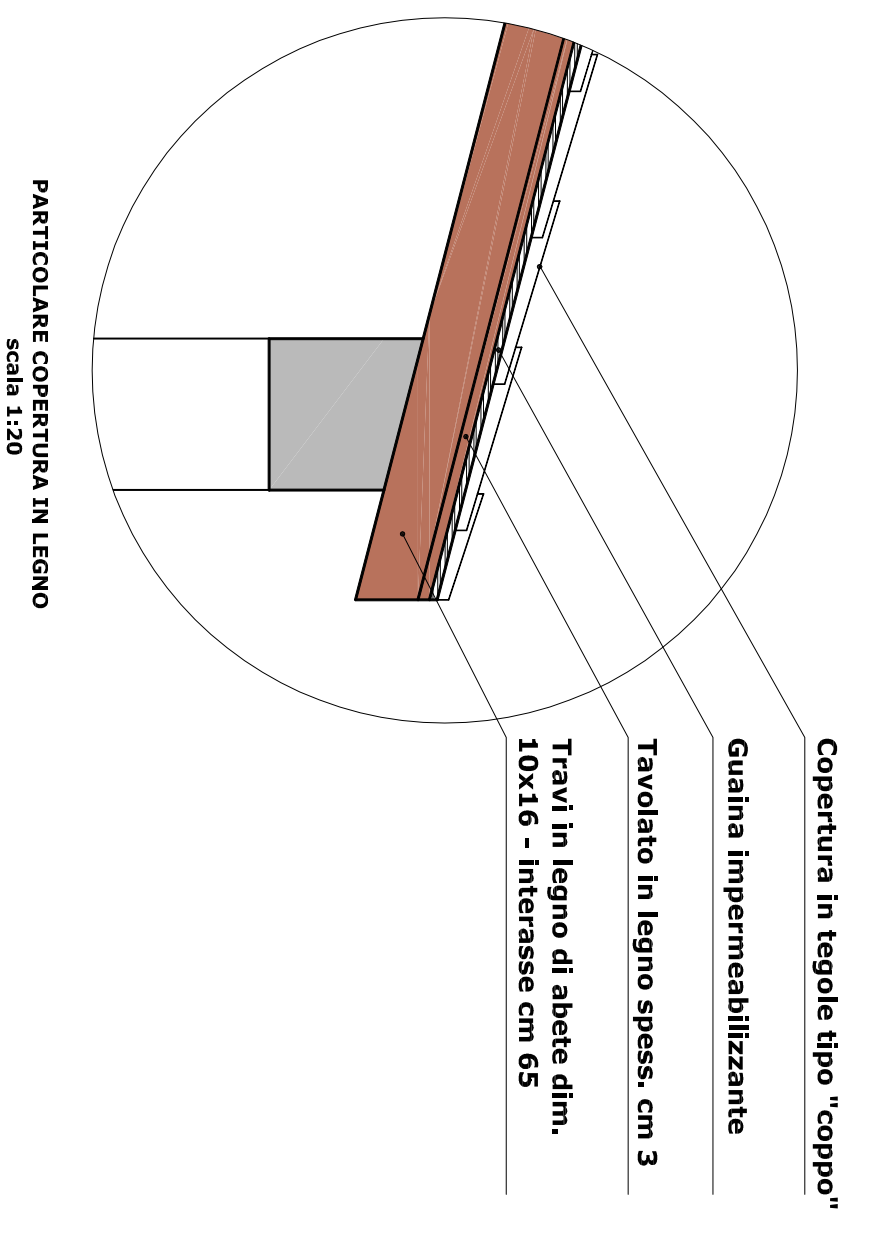
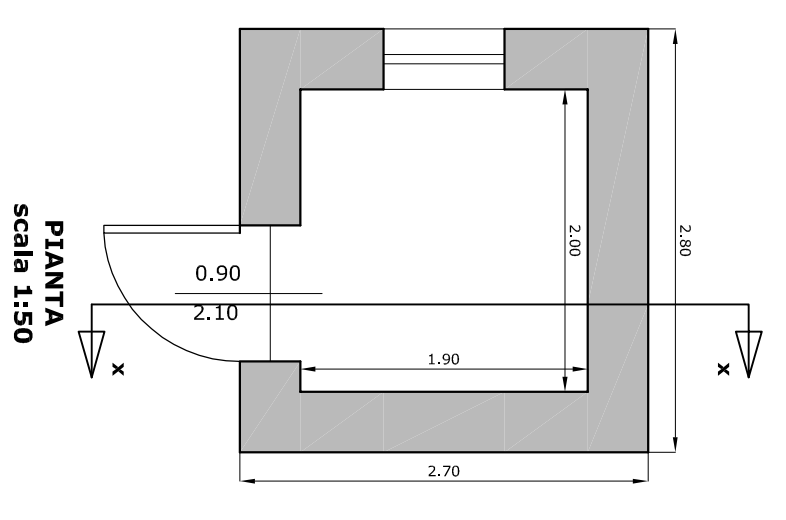
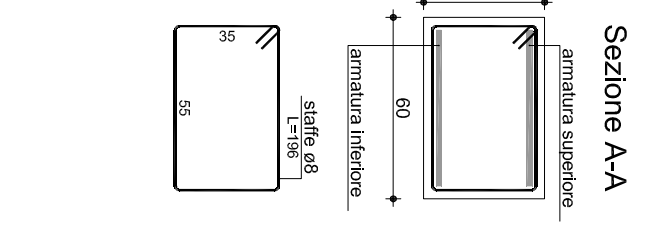
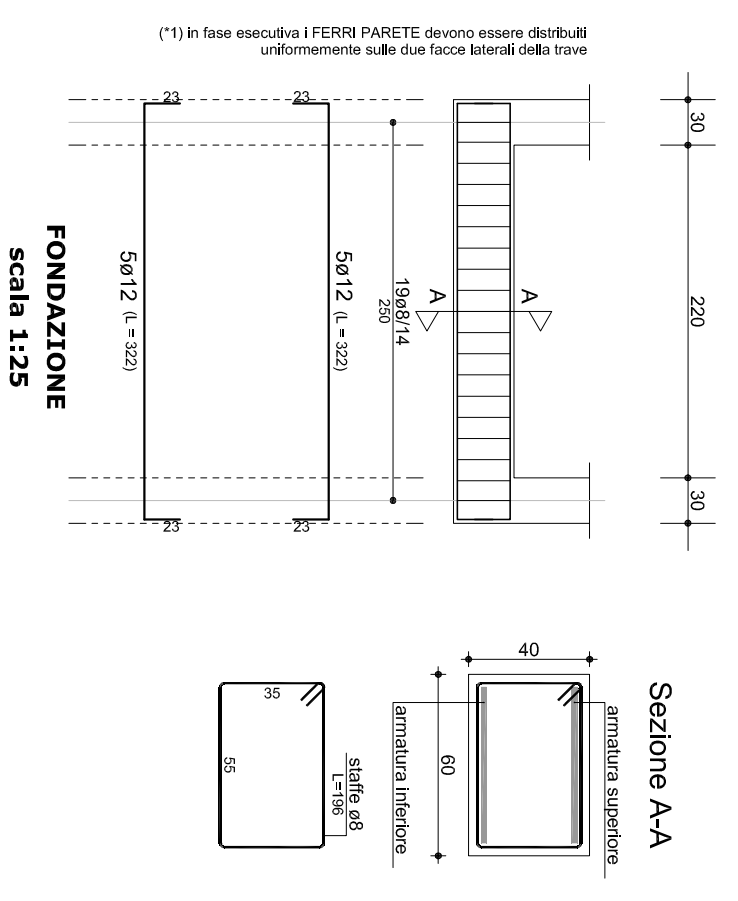
COMPLETAMENTO STRUTTURA RICETTIVA S'ANATZU
E SISTEMAZIONE AREA ADIACENTE

Scala
VARIE
TAVOLA
7
Elaborato
LOCALE TECNICO: PLANTE,
PROSPETTI, SEZIONI E
PARTICOLARI COSTRUTTIVI

Data
GIUGNO 2008
DEFINITIVO ESECUTIVO

Committente
COMUNE DI GONNOSCODINA
Responsabile del Procedimento
GEOM. BALDOVINO INCANI

Progettista
ING. SILVESTRO BOI
Approvazione



COMUNE DI
GONNOSCODINA
PROVINCIA DI ORISTANO

PROGETTO

COMPLETAMENTO STRUTTURA RICETTIVA S'ANATZU
E SISTEMAZIONE AREA ADIACENTE

Scala
VARIE
TAVOLA
7
Elaborato
LOCALE TECNICO: PLANTE,
PROSPETTI, SEZIONI E
PARTICOLARI COSTRUTTIVI

Data
GIUGNO 2008
DEFINITIVO ESECUTIVO

Committente
COMUNE DI GONNOSCODINA
Responsabile del Procedimento
GEOM. BALDOVINO INCANI

Progettista
ING. SILVESTRO BOI
Approvazione